



Les Voyage Extraordinaires

IMMERSE · DISCOVER · IMPROVE



QUICK TIP #1

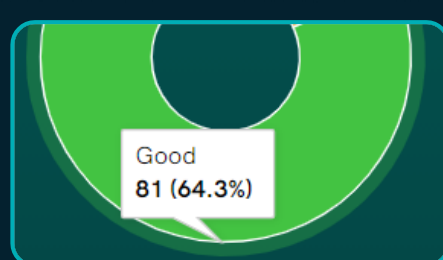
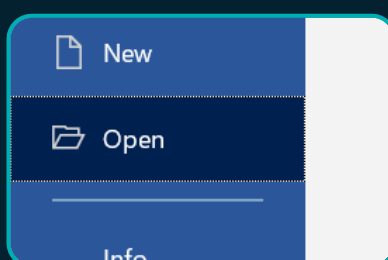
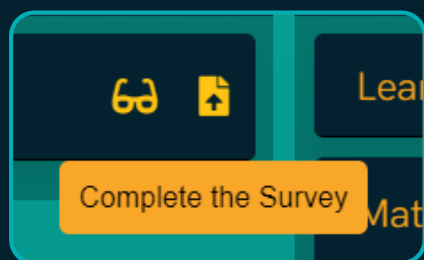
When you create an activity, it will stay open until it concludes or when you click to complete. This way you can leave activities active until you are satisfied that you have what you need.

QUICK TIP #2

Did you know that you can also open your PDF reports in MS Word? This is helpful if you want to take snippets of information or edit the content of your reports.

QUICK TIP #3

Most of the data sets on Nautilus have the hover feature. This allows you to see statistics represented in number form without having to filter or drill down.



Welcome to the Spring Term E-Letter - We want to make sure then when schools subscribe, that they can quickly get moving and reap the dividends. We also recognise that this is a period in time where risk management and other circumstances are preventing schools from business as usual. With this in mind, we have done our best to make sure that the platform can develop behind the scenes, so that schools can get the best out of the next term and the long-term. To do this, we've added new user features and filters, leadership and wellbeing tips as well as a series of workshop webinars exclusive to our subscribers.

Leadership is the capacity to translate vision into reality



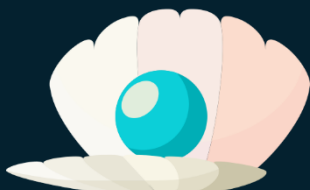
We're taking a lot of time to look at the big picture and to make sure that we can help our schools to make good leadership simpler. When we decided on our price point, the intention was not to have to twist arms to sign up. Instead, we wanted our offer to be fair and considerate. I've spent too long leading in school to simply step out of the classroom and begin a ruthless corporate venture. This is really not what we are about. When schools sign up with us, we will continue to develop Nautilus in response to what fits. For example, I know that schools need reports that

will do the job either during inspection or for any other external eye, and so our reports can make clear the outcomes in relation to the Ofsted expectations. However, inside the school, we want to promote collaboration and shared leadership as well as teacher growth. For this, the look and feel has to be different. This is why we have included the option to use Ofsted descriptors or not when you observe and feedback. This principle can now be seen in our 'Headlines' area. We want to make sure that Headteachers have an accurate overview, but we also want to be transparent with all staff. You may have noticed we've changed the look and feel of this area. We can now see the amount of activity as well as the outcomes, without the explicit Ofsted categories. They're there if you hover, but otherwise, it's got the RAG colour scheme. This area is now even more powerful when you begin to use the new filter, presenting your teaching profile in specific subject areas.

School leaders are now telling me how much they are looking forwards to putting Nautilus to good use for the second half of the year, which is only ever going to be about really good teaching and learning. Have a great Spring term and Easter- David, and the Nautilus Team.

Our New Welcome Icons

When you log in each day you will now see a little pop-up icon appear with a friendly message. We don't want Nautilus just to be all about numbers and data, we want to be thinking about leadership and people. These messages only appear once before disappearing and there are five categories altogether.



'Pearl of Wisdom' – Leadership Quotes

'Tell me and I forget, teach me and I may remember, involve me and I learn.'

'Your Lifesaver' – Wellbeing

Eat well to feed the brain. A balanced, nutritious diet will benefit your mental health as well as improve your mental wellbeing.



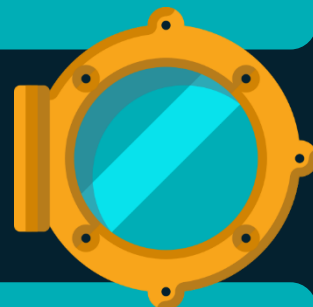
'Nemo and the Nautilus'

Jules Verne was born in 1808 in Nantes, a seafaring city in the west of France.



'The View Outside' – Global Education insights

Summer holidays last from the middle of December to early March in Chile, giving children three months off.



'Deep Dive' – Hints and tips

Groups : Take a snapshot learning walk focusing only on your pupil premium children (or focus groups). Label your walk with a 'Pupil Premium' title.



Leadership is the capacity to translate vision into reality

Exclusive Nautilus Workshops

We're going to be launching our new Nautilus workshops in the summer term. These will be exclusive and free for our subscribers. Our workshops will focus on supporting other staff and leaders within your school, demonstrating great ways to capture provision as well as some expert leadership advice to compliment and aid. We want to help schools to strengthen leadership across the school, without always having to cascade information.

We would recommend booking early as each workshop will be limited to 25 attendees, so that we can accommodate some discussion and questions. Max 2 staff per workshop.



SEND – 'Capturing your SEND Provision'

5 May, 1pm duration: 1hr

Who? SENDco's and/or teaching staff.

An introduction and walkthrough of the SEND drop-in observation tool, how this can help to audit your SEND provision and identify critical areas for improvement. We will also look at reporting SEND to others and the process of individual feedback for your teachers.

[Book your ticket here](#)

Building – 'How to Create Bespoke Learning Walks, Surveys and Observations'

12 May, 1pm duration: 1hr

Who? Anyone.

A workshop focussing on the Builder tool and how you can quickly clone, edit and create bespoke learning walks, books studies, observations and surveys.

[Book your ticket here](#)

Why?
It can be difficult for busy class teachers to be great subject leaders too.

How?
Perform quick and regular learning walks and book studies with an iPad or tablet.
[Create great PDF insight reports.](#)

nautilus
Clarity for school leaders

Subject Leadership – 'How to Capture, Report and Improve Your Subject Area'

19 May, 1pm duration: 1hr

Who? Subject Leaders.

Use Nautilus to strengthen your subject leadership. Learn how to perform great collaborative learning walks and book studies for a critical point of knowledge. Use your reports and analysis to evaluate and improve your subject area.

[Book your ticket here](#)

New Platform Developments - User Status

When you add your observers, you can now choose what you would like them to access. There are 3 levels of security.

Headteacher User

This is an access all areas user and this position is designed to be able to administrate users and teams, create and participate and access all outcomes and analysis. *These users are the only ones who can add and remove people.*



Leadership User

This user is designed to be able to create, design and set activities up. Leadership users can create a learning walk or activity and assign it to others. They can also use the builder to clone, edit and write. *These users do not have direct access to the analysis or reports.*



User

These users are designed to participate and to contribute to activities. They can communicate and discuss their contributions via conversations.



Maintenance and downtime

To avoid disruption to your school day, please remember that Nautilus sleeps between 11pm and 6am. This is when we perform maintenance and updates.

Headlines

Your headlines page now has a few subtle changes and additions. Firstly, the staff observations chart has been changed simply to reflect the amount of observations with the outcomes RAG ratings incorporated. This is simply to allow for easy interpretation, particularly for the Headteachers overview, without inadvertently focusing on just inspection descriptors. The filter tool at the side allows you to key in subject areas and to see a subject specific teaching profile.

Add Observer

Enter Observer Name *

Enter Observer Email *

Select School Role *

HeadTeacher

Select HeadTeacher Access *

HeadTeacher User

Leadership User

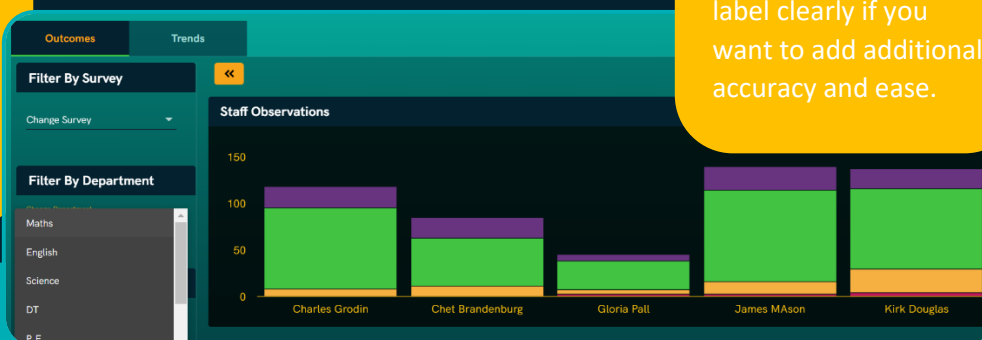
User

Add Cancel



Search Tools

You will now be seeing more of these handy little tools around the platform. These can help you just to key in words and find reports and activities in no time. Remember to label clearly if you want to add additional accuracy and ease.



*Featured Setting***Lawnswood Campus,
Wolverhampton.**

We're delighted to be working with the team at the Lawnswood Campus. Their provision for children and young people is both bespoke and impressive. Executive Headteacher, Rachael Brown introduced us to their ambitious and innovative leadership team.

We asked assistant Headteacher, Andy Higgs, to offer us some insight on their settings and how Nautilus can help them to evaluate and develop their teaching and learning.

Lawnswood Campus is home to three Pupil Referral Units, The Braybrook Centre, The Midpoint Centre and The Orchard Centre which includes the Nightingale Home and Hospital Service serving the schools in Wolverhampton. This is part of a city-wide strategy to promote inclusion and positive behaviour in safe, secure, child-centred, positive and nurturing environments. We pride ourselves in having an ethos which is committed to striving for the highest standards in Safeguarding, SEND, Leadership and Management, Quality of Education, Behaviour and Attitudes and Personal Development - all of which are underpinned by our Lawnswood Campus STAR Spirit: **Support, Trust, Achieve, Respect**; and our Lawnswood Campus Values: **Kindness, Empathy, Honesty, Positivity, Curiosity, Resilience, Commitment and Responsibility.**

'We pride ourselves in having an ethos which is committed to striving for the highest standards,'

We have been looking to develop our quality assurance processes across the Campus. One of our priorities has been to increase the level of collaboration and increase the accessibility of data and feedback to all stakeholders. Nautilus will give us the opportunity to develop professionally, encouraging dialogue between staff due to the nature of the software. Being able to bring all of our QA measures and indicators into one software package is very appealing.

'Being able to bring all of our QA measures and indicators into one software package is very appealing..'

We will be using Nautilus to bring together all stakeholders, both internal and external to measure, record and showcase the progress that we are making across the Campus. We will focus its initial use through Quality of Education leads but will look to integrate the software into working practise across the Campus. It will replace our current recording practises for observations, learning walks and stakeholder feedback.

**Big Picture****7956**

Number of children in
Nautilus schools and
settings.

Big Picture**31**

Number of new Nautilus
schools and settings since
Christmas.

Big Picture**55**

Highest number of
activities performed
within one setting.